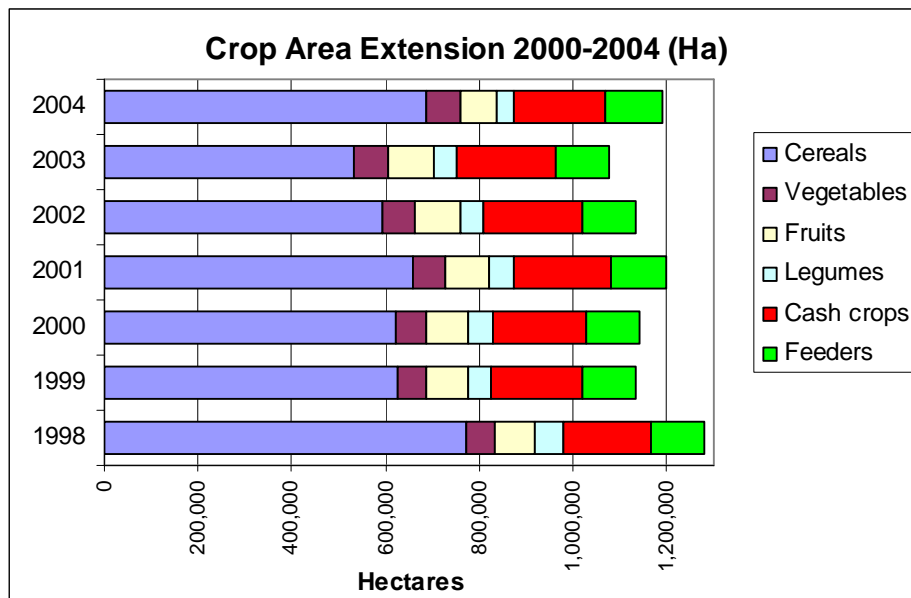
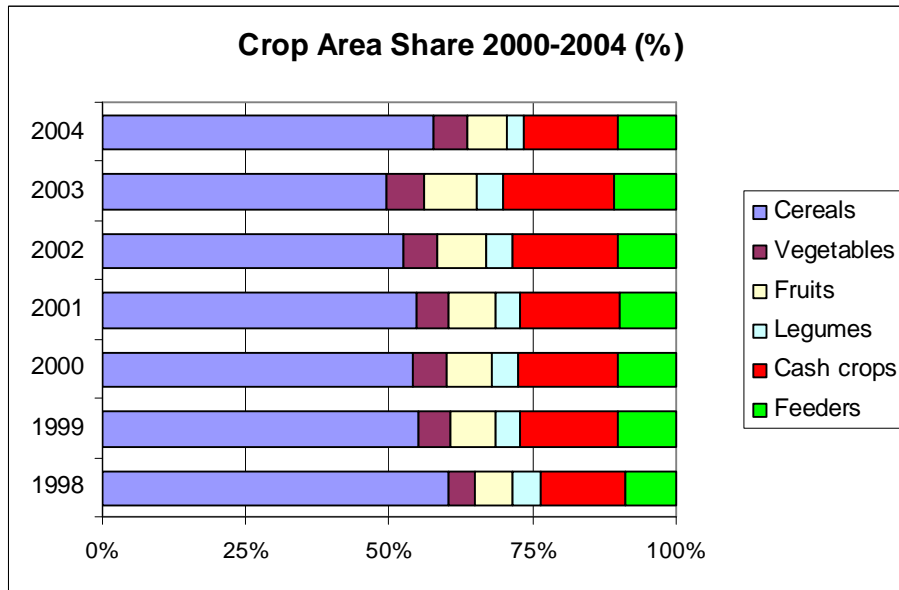
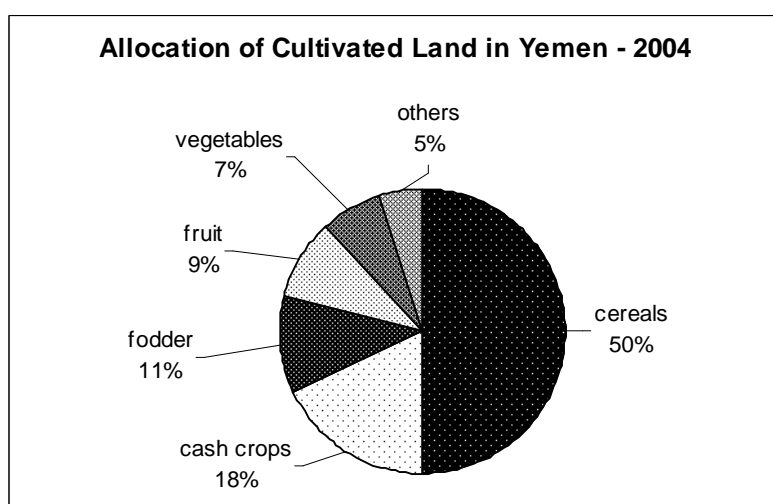
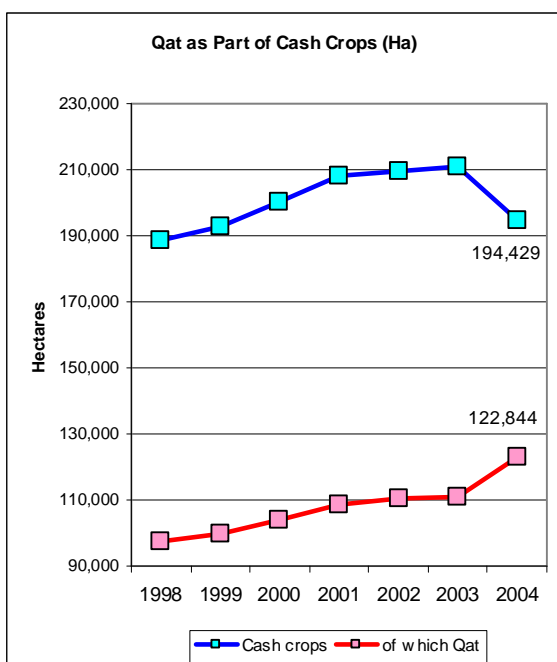




**Annex 11: Assorted agricultural statistics**



## Managing Water for Development Towards a Joint Vision for Water Resources and Agriculture



Added Value Increase of Mayor Crops				
CROP	YER bn 2003	YER bn 2004	% incr.	% in 2004
Qat	283	312	10.2%	62.9%
Fruits 1)	70	77	10.0%	15.5%
Vegetables	46	50	8.7%	10.1%
Grains	27	29	7.4%	5.8%
Forage	13	14	7.7%	2.8%
Others	14	14	0.0%	2.8%
<b>TOTAL</b>	<b>453</b>	<b>496</b>	<b>9.5%</b>	<b>100.0%</b>

1) 2004 Added Value of Mayor Fruits		
CROP	YER bn 2004	% in 2004
Oranges	25	32.5%
Grapes	21	27.3%
Bananas	6	7.8%
Dates	3	3.9%
Others	22	28.6%
<b>TOTAL</b>	<b>77</b>	<b>100.0%</b>

