

Sana'a Basin Water Management Project

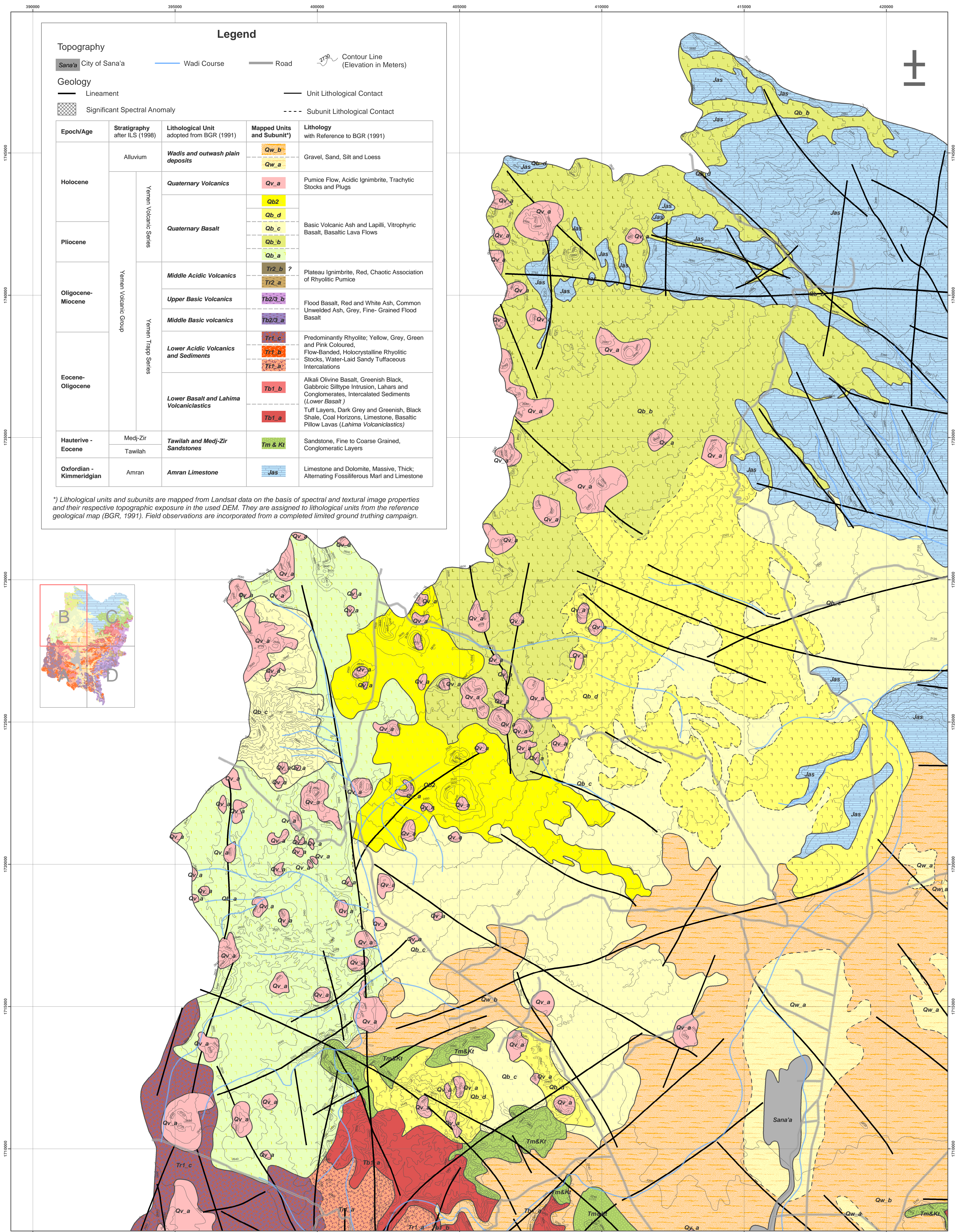
Satellite Imagery / Data Analysis Study along with Ground Truth and Meteorological Monitoring

IDA Credit 3774-YEM
Contract No RFP No 2/04

-Republic of Yemen-



Compiled Geological Map Sheet B



Epoch/Age	Stratigraphy after ILS (1998)	Lithological Unit adopted from BGR (1991)	Mapped Units and Subunit*	Lithology with Reference to BGR (1991)
Holocene	Alluvium	Wadis and outwash plain deposits	Qv_b Qv_a	Gravel, Sand, Silt and Loess
		Quaternary Volcanics	Qv_a	Pumice Flow, Acidic Ignimbrite, Trachytic Stocks and Plugs
	Qb2			
	Pliocene	Quaternary Basalt	Qb_d	
Qb_c			Basic Volcanic Ash and Lapilli, Vitrophyric Basalt, Basaltic Lava Flows	
Qb_b				
Qb_a				
Oligocene-Miocene	Middle Acidic Volcanics	Tr2_b ?		
		Tr2_a	Plateau Ignimbrite, Red, Chaotic Association of Rhyolitic Pumice	
		Tb2/3_b	Flood Basalt, Red and White Ash, Common Unwelded Ash, Grey, Fine-Grained Flood Basalt	
		Tb2/3_a		
Eocene-Oligocene	Lower Acidic Volcanics and Sediments	Tr1_c	Predominantly Rhyolite; Yellow, Grey, Green and Pink Coloured, Flow-Banded, Holocrystalline Rhyolitic Stocks, Water-Laid Sandy Tuffaceous Intercalations	
		Tr1_b		
		Tr1_a		
		Tb1_b	Alkali Olivine Basalt, Greenish Black, Gabbroic Silltype Intrusion, Lahars and Conglomerates, Intercalated Sediments (Lower Basalt)	
Lower Basalt and Lahima Volcaniclastics	Tb1_a	Tuff Layers, Dark Grey and Greenish, Black Shale, Coal Horizons, Limestone, Basaltic Pillow Lavas (Lahima Volcaniclastics)		
	Tb1_a			
Hauterive - Eocene	Medj-Zir Tawilah	Tawilah and Medj-Zir Sandstones	Tm & Kt	Sandstone, Fine to Coarse Grained, Conglomeratic Layers
Oxfordian - Kimmeridgian	Amran	Amran Limestone	Jas	Limestone and Dolomite, Massive, Thick; Alternating Fossiliferous Marl and Limestone

*) Lithological units and subunits are mapped from Landsat data on the basis of spectral and textural image properties and their respective topographic exposure in the used DEM. They are assigned to lithological units from the reference geological map (BGR, 1991). Field observations are incorporated from a completed limited ground truthing campaign.

Prepared by:
GAFAG
GAF AG
Arnulfstr. 197
80634 München
Germany

In Association with:
VISTA
VISTA GmbH
Anton-Ferstl-Str. 11
D-82234 Wessling
Germany

Q
Ghayth Aqatech Ltd.
Hajrat Asasim Building # 8
PO Box 7219
Sana'a
Republic of Yemen

Projection UTM, Zone 38
Spheroid WGS84, Datum WGS84

Mapping Base: Remote Sensing Data:
Landsat ETM Colour Composite 741; Spatial Resolution 30m; Path/Row: 16649 from 20.09.2001
Spot 5 Colour Merge Mosaic; Spatial Resolution 2.5m; Path/Row: 146218; 146219 from 05.09.2004
Digital Terrain Model: NASA Shuttle Radar Topography Mission (SRTM) 2000; Spatial Resolution 90 m; C-Band

Geological Reference Maps and Data:
Geological Map Sana'a, Sheet 15 G, 1:250 000, The Natural Resources Project, Ministry of Oil and Mineral Resources, Oil and Mineral Cooperation, Mineral Exploration Board, Republic of Yemen.
By Robertson Group.
Geological Map of the Yemen Arab Republic, Sheet Sana'a, 1:250 000, Ministry of Oil and Mineral Resources, Sana'a, Republic of Yemen/Federal Institute of Geoscience and Natural Resources Hannover, 1991, Federal Republic of Germany. By W. Kruck and U. Schäfer.
International Lexicon of Stratigraphy, Volume III, Republic of Yemen: Second Edition, Completely Revised, Updated and Expanded, 1998. IUGS Publications No. 34, by Zaid R. Beynon, Mustafa A.L. Al-Sun, Hamed El Nakhai, Ismail N. Al-Garad, Rasheed S. Barabai, Abdul Salter O. Nani and Mohammad H. Al-Aswadi

Scale 1 : 50000

