

# Sana'a Basin Water Management Project

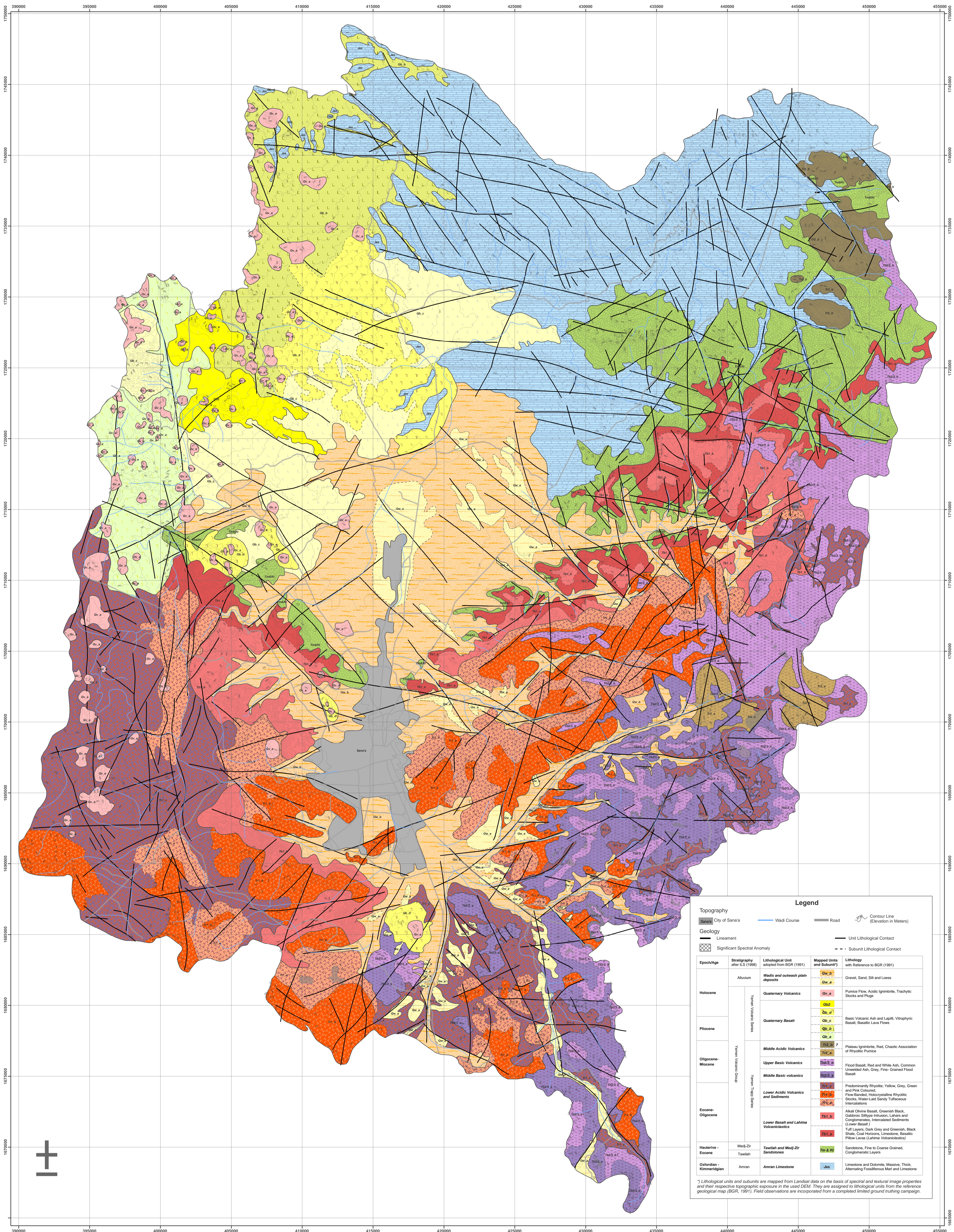
Satellite Imagery / Data Analysis Study along with Ground Truth and Meteorological Monitoring

IDA Credit 3774-YEM  
Contract No RFP No 2/04

-Republic of Yemen-



## Compiled Geological Map



Prepared by:  
**GAFAG**  
GAF AG  
Arnulfstr. 197  
80634 München  
Germany

Prepared for:  
REPUBLIC OF YEMEN  
Ministry of Water and Environment  
Sana'a Basin Water Management Project  
PROJECT Coordination Unit (PCU)

In Association with:  
**VISTA**  
VISTA GmbH  
Anton-Ferstl-Str. 11  
D-82234 Wessling  
Germany

Ghayth Aqatech Ltd.  
Hajrat Asalam Building # 8  
P.O. Box 7219  
Sana'a  
Republic of Yemen

Projection UTM, Zone 38  
Spheroid WGS84, Datum WGS84

Mapping Base: Remote Sensing Data:  
Landsat ETM Colour Composite 741; Spatial Resolution 30m; Path/Row: 166/49 from 20.09.2001  
Spot 5 Colour Merge Mosaic; Spatial Resolution 2.5m; Path/Row: 146318; 146319 from 08.09.2004

Digital Terrain Model: NASA Shuttle Radar Topography Mission (SRTM) 2000; Spatial Resolution 90 m; C-Band

Geological Reference Maps and Data:  
Geological Map Sana'a, Sheet 15 G, 1:250,000, The Natural Resources Project, Ministry of Oil and Mineral Resources, Oil and Mineral Cooperation, Mineral Exploration Board, Republic of Yemen, By Robertson Group.

Geological Map of the Yemen Arab Republic, Sheet Sana'a, 1:250,000, Ministry of Oil and Mineral Resources, Sana'a, Republic of Yemen/Federal Institute of Geoscience and Natural Resources Hannover, 1991, Federal Republic of Germany, By W. Kruck and U. Schäfer.

International Lexicon of Stratigraphy Volume III, Republic of Yemen: Second Edition, Completely Revised, Updated and Expanded, 1998, IUGS Publications No.34, by Zaid R. Beyroun, Mustafa A. Al-Sun, Hamed El Nakhai, Ismail N. Al-Garad, Rasheed S. Baraka, Abdul Salter O. Nani and Mohammad H. Al-Asawah

Scale 1 : 100 000

